

Online Resource 1

A Reversal in the Relationship of Human Development With Fertility?

Kenneth Harttgen and Sebastian Vollmer

Tables and Figures

Table S.1: Fertility, HDI and its components values in 1980 by country

Country	TFR	HDI	Edu index	GNP index	Health index	Country	TFR	HDI	Edu index	GNP index	Health index	Country	TFR	HDI	Edu index	GNP index	Health index
<i>United States</i>	1.84	0.81	0.79	0.79	0.85	<i>United A. E.</i>	5.42	0.63	0.33	1.00	0.75	Botswana	6.22	0.43	0.26	0.48	0.64
<i>Switzerland</i>	1.55	0.80	0.71	0.82	0.88	<i>Portugal</i>	2.19	0.62	0.45	0.67	0.81	Guatemala	6.18	0.41	0.23	0.50	0.59
<i>Australia</i>	1.89	0.79	0.76	0.76	0.86	Bahrain	4.92	0.61	0.41	0.76	0.75	Kenya	7.46	0.40	0.33	0.34	0.60
<i>Canada</i>	1.74	0.79	0.73	0.77	0.87	Panama	3.74	0.61	0.52	0.56	0.79	Lesotho	5.59	0.40	0.35	0.33	0.53
<i>Norway</i>	1.72	0.79	0.69	0.80	0.88	Venezuela	4.20	0.61	0.45	0.67	0.76	Egypt	5.37	0.39	0.25	0.42	0.58
<i>New Zealand</i>	2.03	0.79	0.80	0.72	0.84	<i>Chile</i>	2.68	0.61	0.53	0.54	0.78	Indonesia	4.43	0.39	0.33	0.33	0.54
<i>Netherlands</i>	1.60	0.78	0.70	0.77	0.88	Costa Rica	3.62	0.60	0.45	0.57	0.83	Zambia	7.18	0.38	0.32	0.34	0.51
<i>Sweden</i>	1.68	0.77	0.69	0.76	0.88	Jamaica	3.73	0.59	0.49	0.53	0.80	China	2.63	0.37	0.36	0.19	0.73
<i>Denmark</i>	1.55	0.77	0.70	0.76	0.86	Mexico	4.71	0.58	0.41	0.65	0.74	Ghana	6.54	0.36	0.32	0.29	0.52
<i>Japan</i>	1.75	0.77	0.69	0.74	0.89	Ecuador	5.06	0.58	0.51	0.56	0.68	Cameroon	6.43	0.35	0.24	0.37	0.49
<i>Israel</i>	3.24	0.75	0.70	0.70	0.85	Peru	5.01	0.56	0.49	0.56	0.63	Morocco	5.65	0.35	0.17	0.42	0.60
<i>Iceland</i>	2.48	0.75	0.62	0.75	0.90	Saudi Arabia	7.21	0.56	0.32	0.84	0.65	Cote d'Ivoire	7.61	0.35	0.18	0.43	0.56
<i>Finland</i>	1.63	0.74	0.67	0.74	0.84	Fiji	3.91	0.55	0.51	0.48	0.69	Togo	7.21	0.35	0.25	0.30	0.55
<i>Belgium</i>	1.67	0.74	0.65	0.75	0.84	Malaysia	3.79	0.54	0.40	0.53	0.74	India	4.68	0.32	0.22	0.27	0.56
<i>United King.</i>	1.89	0.74	0.65	0.73	0.84	Colombia	3.99	0.54	0.39	0.54	0.72	Pakistan	6.54	0.31	0.15	0.33	0.60
<i>Austria</i>	1.62	0.73	0.61	0.76	0.83	Paraguay	5.22	0.53	0.39	0.51	0.74	Senegal	7.43	0.29	0.16	0.35	0.43
<i>Ireland</i>	3.23	0.72	0.66	0.68	0.83	Mauritius	2.67	0.52	0.41	0.49	0.72	CAR	5.95	0.26	0.14	0.29	0.45
<i>Luxembourg</i>	1.50	0.72	0.58	0.78	0.83	Philippines	5.18	0.52	0.50	0.44	0.65	Benin	7.03	0.26	0.12	0.31	0.48
<i>France</i>	1.85	0.71	0.55	0.76	0.86	Gabon	5.17	0.51	0.34	0.71	0.54	Bangladesh	6.37	0.26	0.19	0.21	0.44
<i>Greece</i>	2.23	0.71	0.56	0.73	0.86	Jordan	7.23	0.51	0.39	0.50	0.67	Malawi	7.43	0.26	0.19	0.24	0.39
<i>Italy</i>	1.64	0.70	0.54	0.75	0.86	Guyana	3.57	0.50	0.49	0.39	0.65	Sudan	6.44	0.25	0.11	0.29	0.47
<i>Hungary</i>	1.91	0.69	0.64	0.66	0.78	Thailand	3.39	0.48	0.37	0.41	0.73	Rwanda	8.29	0.25	0.15	0.26	0.41
<i>Malta</i>	1.99	0.68	0.61	0.63	0.84	Turkey	4.45	0.47	0.28	0.56	0.64	Zimbabwe	7.10	0.24	0.30	0.07	0.62
<i>Spain</i>	2.22	0.68	0.51	0.71	0.87	Congo	6.59	0.46	0.36	0.44	0.63	Sierra Leone	5.56	0.23	0.14	0.25	0.34
<i>Cyprus</i>	2.35	0.66	0.54	0.63	0.86	El Salvador	5.14	0.46	0.32	0.52	0.57	Nepal	5.83	0.21	0.10	0.21	0.44
<i>Argentina</i>	3.33	0.66	0.56	0.65	0.78	Algeria	6.91	0.44	0.24	0.57	0.63	Mozambique	6.49	0.20	0.12	0.17	0.36
Trinidad and T.	3.34	0.66	0.54	0.70	0.75	Nicaragua	6.13	0.44	0.32	0.44	0.61	Burundi	6.65	0.18	0.09	0.16	0.42
Latvia	1.86	0.65	0.58	0.61	0.78	Tunisia	5.33	0.44	0.26	0.48	0.67	Niger	7.70	0.17	0.05	0.27	0.31
Bulgaria	2.05	0.65	0.61	0.56	0.81	Honduras	6.31	0.44	0.30	0.44	0.62	Mali	7.05	0.16	0.06	0.25	0.32

Note: Countries are sorted by HDI. The sample includes all countries for which data from 1980 to 2009 are available (between 1980 and 2000 on a five-year interval basis and between 2000 and 2009 on an annual basis). Countries in italic are countries used by Myrskylä et al. (2009) for their longitudinal analysis. The total (unbalanced) sample of countries include also countries for which some data points are missing. For these countries descriptive statistics are not presented but available on request. These countries are: Afghanistan, Albania, Andorra, Angola, Armenia, Azerbaijan, Barbados, Belarus, Belize, Bhutan, Bolivia, Bosnia and Herzegovina, Brazil, Burkina Faso, Cambodia, Cape Verde, Chad, Comoros, Croatia, Czech Republic, Djibouti, Dominican Republic, Equatorial Guinea, Estonia, Ethiopia, Gambia, Georgia, Germany, Guinea, Guinea-Bissau, Haiti, Iran (Islamic Republic of), Kuwait, Kyrgyzstan, Liberia, Liechtenstein, Lithuania, Madagascar, Mauritania, Moldova (Republic of), Mongolia, Montenegro, Myanmar, Nigeria, Papua New Guinea, Poland, Qatar, Romania, Russian Federation, Sao Tome and Principe, Serbia, Slovakia, Slovenia, South Africa, Sri Lanka, Suriname, Swaziland, Syrian Arab Republic, Tajikistan, Timor-Leste, Tonga, Turkmenistan, Uganda, Ukraine, Uruguay, Uzbekistan, Viet Nam, Yemen. *Source:* International Human Development Indicators 2011, World Development Indicators 2011; calculations by the authors.

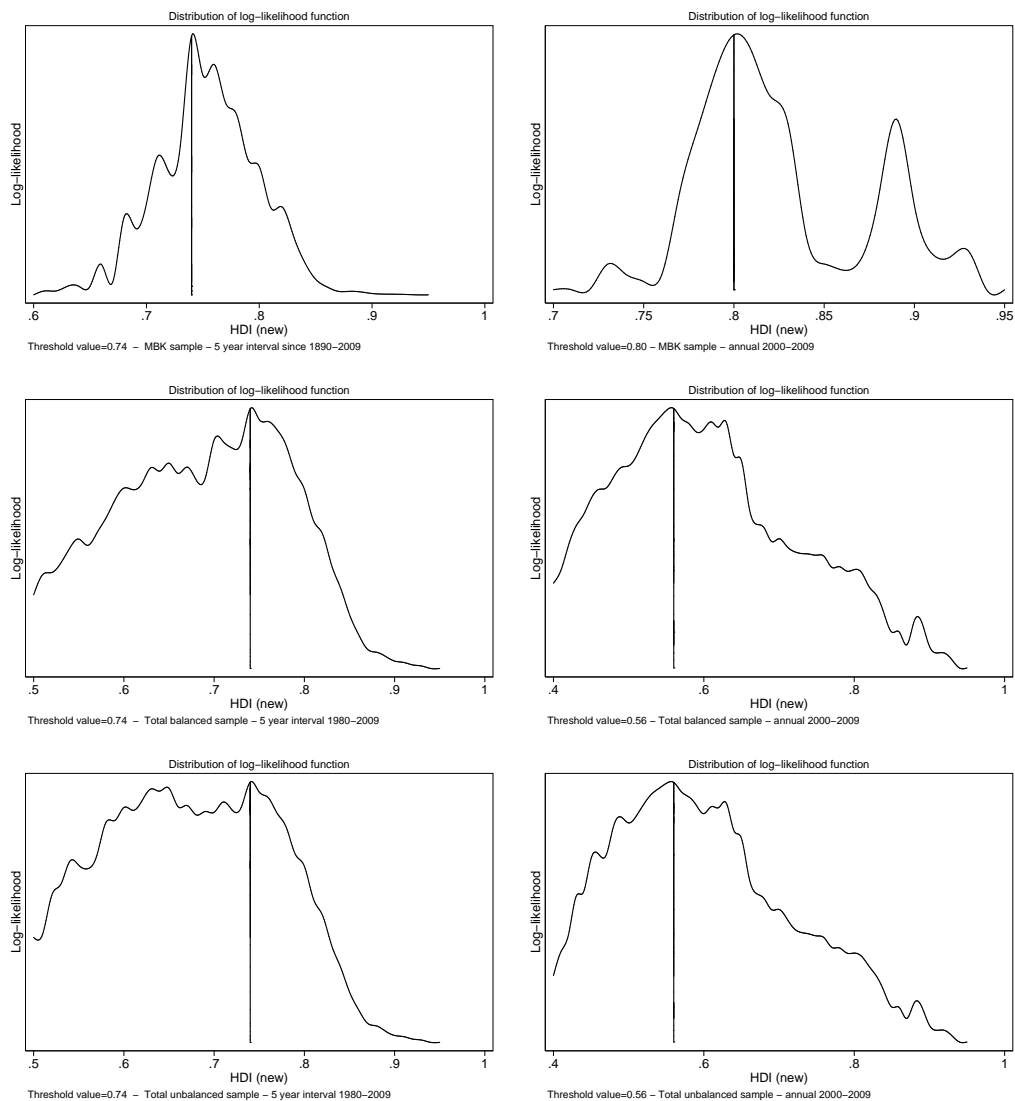
Table S.2: Myrskylä et al. (2009) countries used for the longitudinal analysis of the old HDI

Country	1975		2005	
	TFR	HDI (old)	TFR	HDI (old)
Argentina	3.53	0.80	2.29	0.86
Australia	2.15	0.86	1.77	0.97
Austria	1.82	0.84	1.41	0.93
Belgium	1.74	0.85	1.72	0.94
Canada	1.82	0.89	1.51	0.95
Chile	2.80	0.71	1.97	0.86
Cyprus	2.24	0.77	1.42	0.90
Denmark	1.92	0.87	1.80	0.94
Finland	1.69	0.86	1.80	0.94
France	1.93	0.86	1.92	0.94
Germany	1.45	0.84	1.36	0.92
Greece	2.37	0.83	1.28	0.92
Hungary	2.35	0.78	1.32	0.86
Iceland	2.61	0.85	2.05	0.96
Ireland	3.40	0.82	1.88	0.95
Israel	3.41	0.84	2.82	0.92
Italy	2.21	0.84	1.32	0.93
Japan	1.91	0.86	1.26	0.94
Kuwait	5.89	0.78	2.39	0.88
Luxembourg	1.55	0.84	1.70	0.95
Malta	2.27	0.75	1.37	0.87
New Zealand	2.33	0.85	2.00	0.94
Norway	1.99	0.87	1.84	0.96
Portugal	2.52	0.77	1.40	0.89
S. Korea	3.47	0.72	1.08	0.91
Spain	2.79	0.85	1.33	0.94
Sweden	1.78	0.87	1.77	0.95
Switzerland	1.60	0.88	1.42	0.94
United Arab Emirates	5.66	0.82	2.43	0.86
United Kingdom	1.81	0.85	1.80	0.94
Average	2.50	0.83	1.71	0.92

Note: Countries were sorted by the HDI value in 2005. The base sample includes all countries used in Myrskylä et al. (2009) for which data from 1980 to 2005 are available. Myrskylä et al. (2009) restrict their total sample of countries to countries that had a HDI value 0.85 or higher.

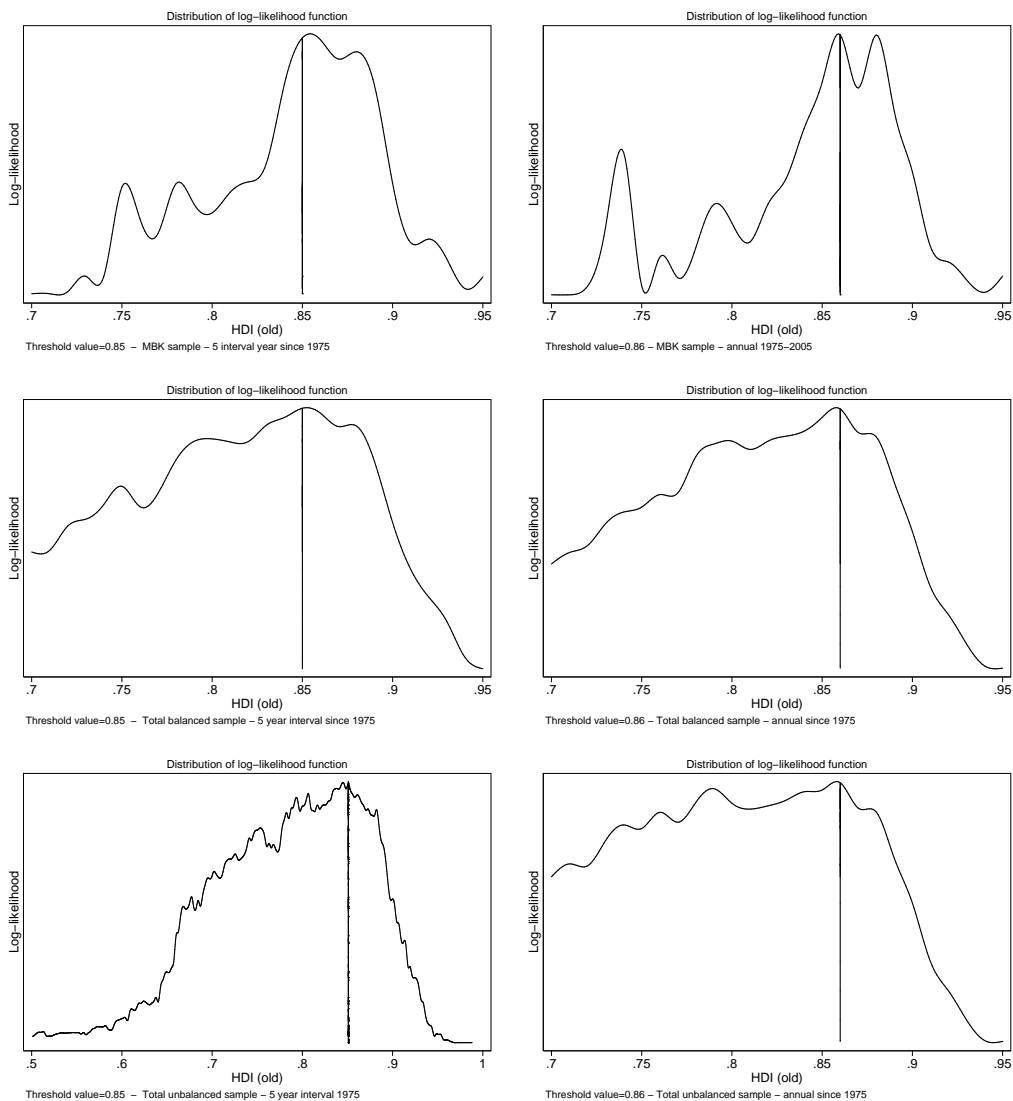
Source: Myrskylä et al. (2009); calculations by the authors.

Figure S.1: Log likelihood: Difference-in-differences (HDI new)



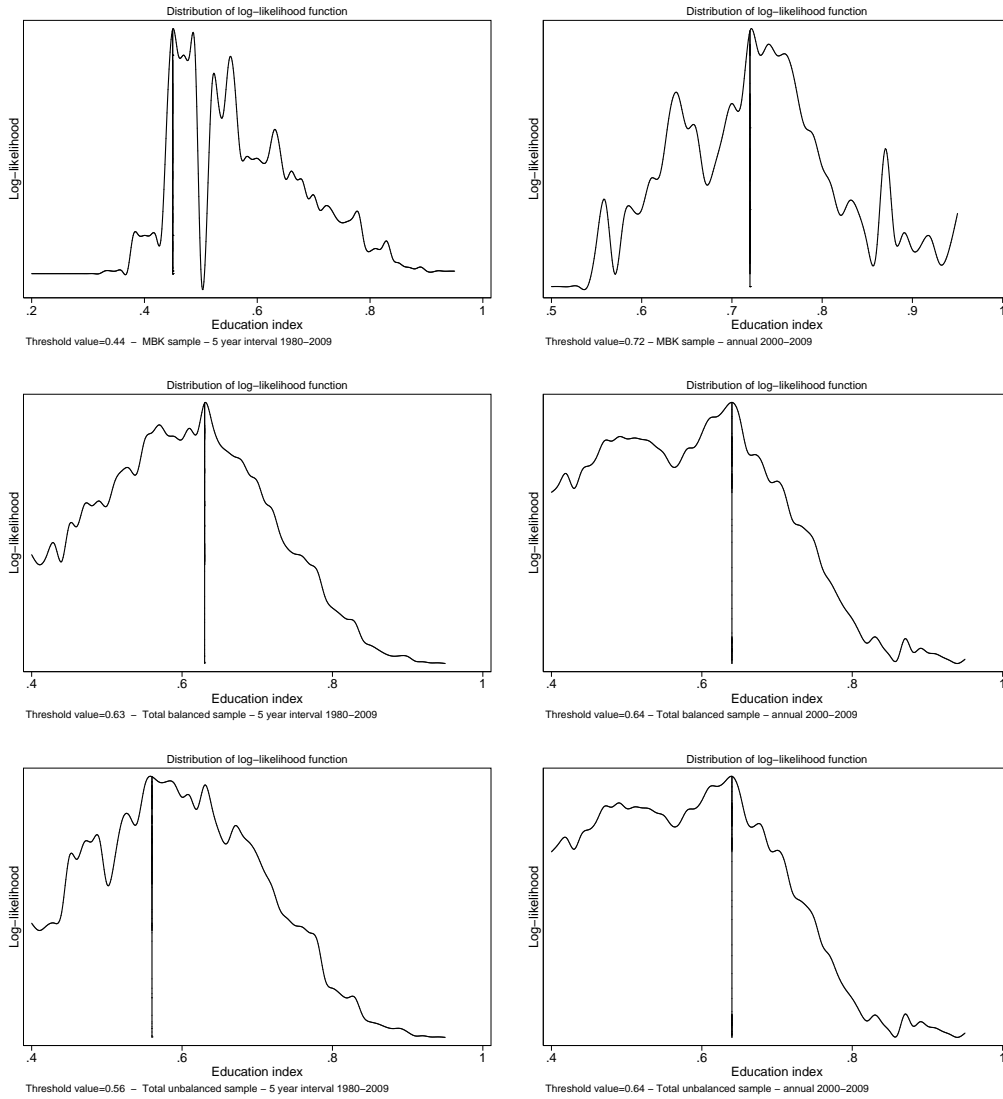
Source: International Human Development Indicators 2011, World Development Indicators 2011;

Figure S.2: Log likelihood: Difference-in-differences (HDI old)



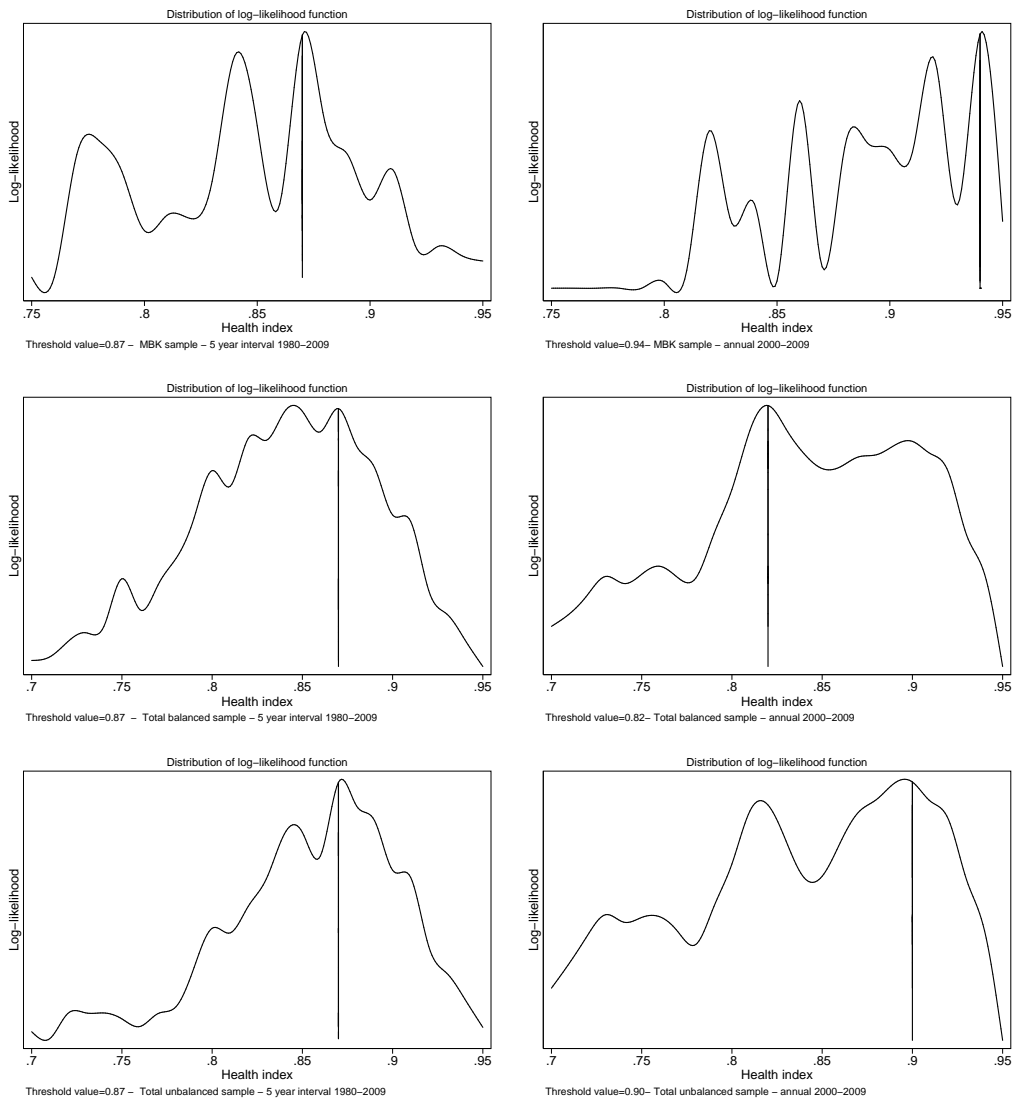
Source: International Human Development Indicators 2011, World Development Indicators 2011.

Figure S.3: Log likelihood: Difference-in-differences (Education Index)



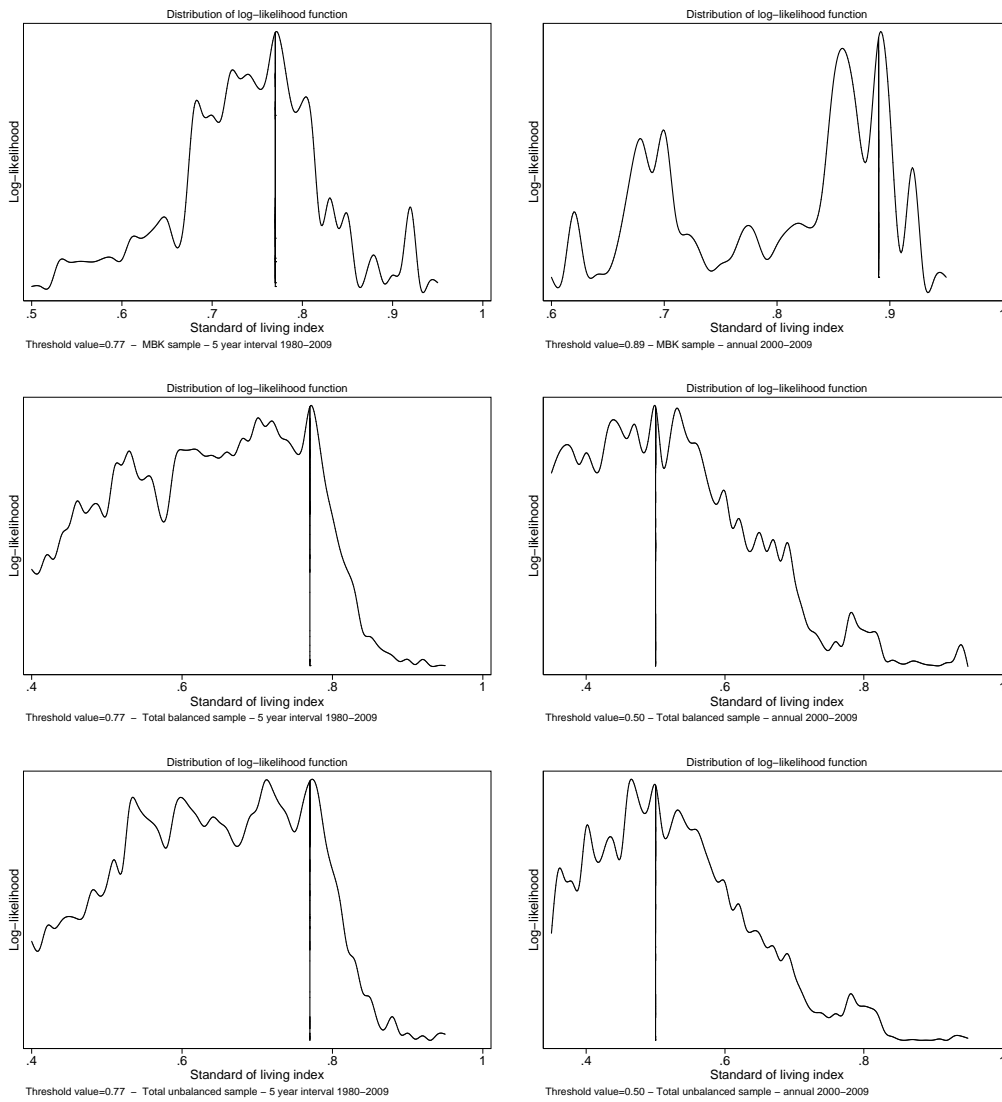
Source: International Human Development Indicators 2011, World Development Indicators 2011.

Figure S.4: Log likelihood: Difference-in-differences (Health Index)



Source: International Human Development Indicators 2011, World Development Indicators 2011.

Figure S.5: Log likelihood: Difference-in-differences (Standard-of-living Index)



Source: International Human Development Indicators 2011, World Development Indicators 2011.